

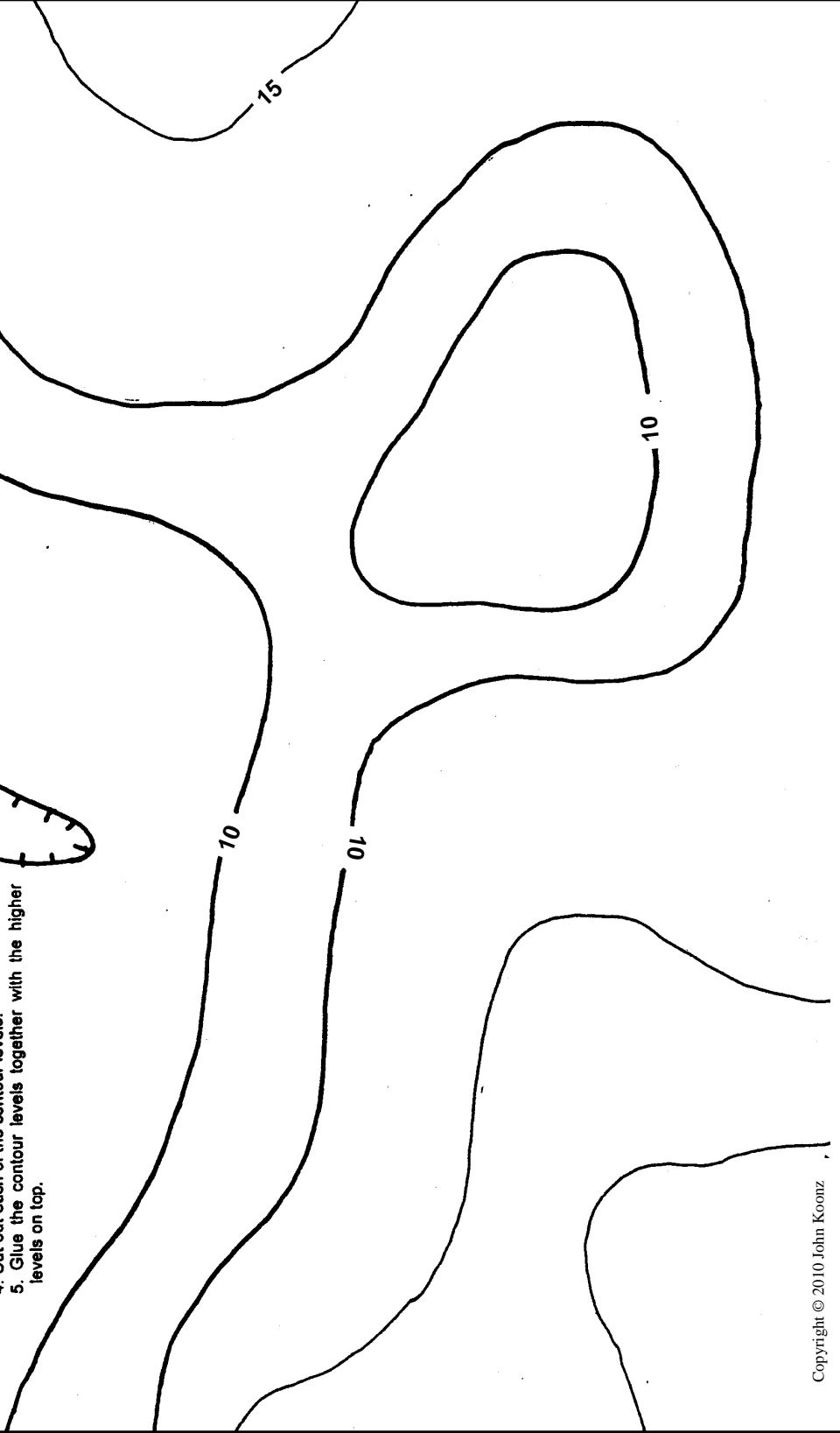
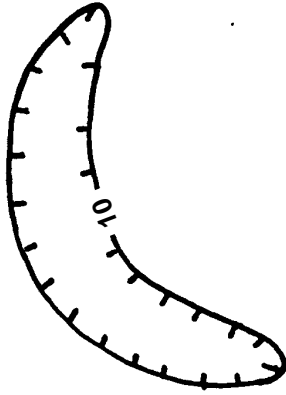
Geoblot

Meander Scar and Cutoff

Contour Interval 5'

Instructions:

1. Cut out a rectangular base.
2. Figure out and write down the contour level next to each line.
3. Use carbon paper to transfer the lines, one at a time, onto separate pieces of cardboard.
4. Cut out each of the contour levels.
5. Glue the contour levels together with the higher levels on top.



Visit the Geoblox website (www.geoblox.com) for complete information about these model books!



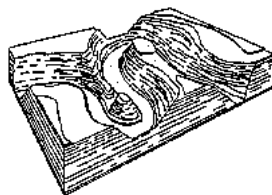
| Item | Weight (lbs) | Qty. | Price/Item | Total |
|---|--------------|------|----------------|-------|
| Astronomy Block Models | .5 lbs | # | \$25.00 | |
| Grand Canyon Block and Topo Models | .5 lbs | # | \$21.00 | |
| Hurricane Katrina Disaster Block Models | .5 lbs | # | \$25.00 | |
| Historical Geology & Evolution | .8 lbs | # | \$25.00 | |
| 2010 TEKS Grade 5 Texas Science Block Models | .6 lbs | # | \$25.00 | |
| 2010 TEKS Grade 6 Texas Science Block Models | .6 lbs | # | \$25.00 | |
| 2010 TEKS Grade 7 Texas Science Block Models | .6 lbs | # | \$25.00 | |
| 2010 TEKS Grade 8 Texas Science Block Models | .6 lbs | # | \$25.00 | |
| Jamestown | .5 lbs | # | \$21.00 | |
| Castles of the British Isles 1066-1300 Block Models | .5 lbs. | # | \$25.00 | |
| Warship-Conquest of the Mediterranean | .8 lbs | # | \$25.00 | |
| Ancient Cultures Architectural Models | .6 lbs | # | \$25.00 | |
| The Alamo Architectural Model | .4 lbs | # | \$20.00 | |
| Dogtrot House and Outbuildings | .4 lbs | # | \$20.00 | |
| Groundwater Block Models | .6 lbs | # | \$25.00 | |
| Guadalupe Mountains Block and Topo Models | .5 lbs | # | \$21.00 | |
| Volcano Block Models | .6 lbs | # | \$25.00 | |
| Petroleum Game | .5 lbs | # | \$21.00 | |
| Physical Geology Block Models | .5 lbs | # | \$25.00 | |
| Topographic Landform Models | .5 lbs | # | \$30.00 | |
| Plate Tectonics Block Models | .5 lbs | # | \$25.00 | |
| Oceanography Block Models | .5 lbs | # | \$25.00 | |
| Botany Block Models | .5 lbs | # | \$25.00 | |
| More Topographic Landform Models | .5 lbs | # | \$25.00 | |
| | | | ◀ Sub totals ▶ | |

* Schools may provide a Tax number to avoid paying sales tax.

Tax # _____

| |
|-------------------------------|
| Shipping Charges |
| Tax (TX residents add 8.25%)* |
| Total |

| Shipping charges | |
|---------------------|---------------|
| Sub Total | Shipping Cost |
| <\$50.00 | \$5.50 |
| \$51.00 - \$100.00 | \$8.50 |
| \$101.00 - \$150.00 | \$11.50 |
| \$151.00 - \$200.00 | \$14.50 |
| \$201.00 - \$250.00 | \$20.00 |



Send your check and order form to:
Geoblox
PMB-234
12407 North Mopac #100
Austin, TX 78758-2475

- Most orders are shipped within 24 hours.
- Please send a check or purchase order. PayPal orders accepted online.
- Be sure to include the correct amount for shipping. See chart at left.
- If you are not satisfied with your Geoblox product, return it for a full no-questions-asked refund.

A Geoblox Workshop

My name is John Koonz and I taught science for 20 years.

My consulting fee for this 6 hour workshop is \$300. If your district is outside Central Texas, I will also need reimbursement for travel expenses. This workshop can accommodate up to 30 teachers. The cost of materials is \$10 per participant. This will give participants the right to copy the materials for their own classroom use.

My contract can be found online at www.geoblox.com.

In this 6 hour workshop, you will receive:

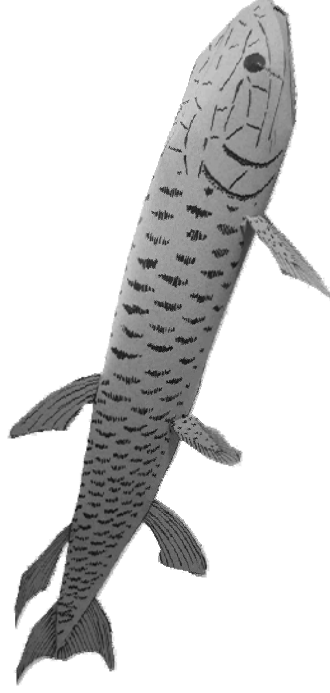
- *Materials and supplies for making the models*
- *Teacher packets including:*
- *Lesson plans*
- *Copies of all activities used*
- *Grading rubrics*
- *Reading list*
- *List of resources*

While science teachers are often told to include “hands-on activities”, I was often frustrated by the lack of good earth-science materials. Many of the activities provided by textbook publishers are too abstract for middle school students. The illustrations in the textbooks are usually well done, but two-dimensional images often fail to convey important geological concepts.

Too often, the subject of evolution is not covered in public schools. Many teachers are unsure how to teach it. This leaves students with little or no understanding of this critically important concept.



Alluvial Fan from *Topographic Landform Models*
(above) Eusthenopteron, a Devonian Period fish
(below)



Where Are the Earth Science Activities?



- Let's face it, there are very few inexpensive hands-on activities for teaching earth-science.
- A good stream table costs \$500, and a set of plastic landform display models costs \$250.
- What can a teacher do with a single plastic model anyway?
- How can teachers get their students involved in the learning process?

Geoblox

PMB—234

12407 North Mopac #100

Austin, TX 78758-2475

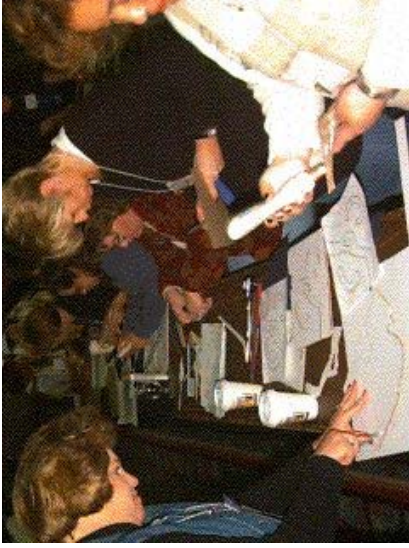
(512) 203-5376

Fax: (206) 339-4284

www.geoblox.com

Koonz@geoblox.com

Sample Workshop Outline



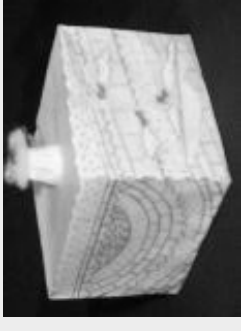
Science teachers from across the state participate in a Geoblox workshop at CAST .

A Geoblox workshop will provide inexpensive hands-on activities that middle and high school science teachers can use in their classes. The activities are correlated to the TEKS .

- The activities I present have been tested in the classroom. They involve kids at a deep conceptual level. These activities are designed to promote genuine understanding.
- I will also demonstrate how these activities can be modified for learning disabled students and enriched for gifted and Talented students.
- Teachers will learn by actually doing the activities. Here is a sample outline of what will be covered:

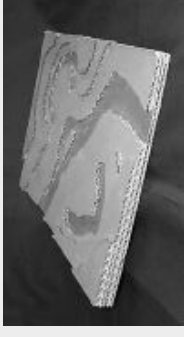
Ordering Geologic Events (1hr.)

- Basic rock types and their symbols
- Law of Superposition
- Faults and folds
- Unconformities
- 2-D Ordering event diagrams
- Build a 3-D ordering event model



Topographic Maps (1hr)

- Types of contour lines
- Build a landform model
- Predict the next map



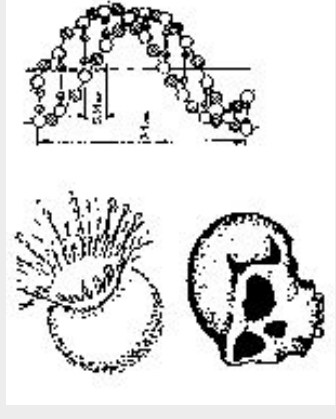
The Petroleum Game (2hrs)

- Basics of structural and petroleum geology
- Petroleum game and discussion
- Geoblox Petrol Game



Teaching Cosmology and Evolution (2hrs)

- Strategies for success!
- Correcting common misconceptions
- Activities:
 - Origins of light elements activity
 - Expanding universe balloon activity
 - Randomness activity
 - Point mutations activity
 - Hardy-Weinberg card activity
 - Cladogram activity
- Legal issues and resources



Geoblot

Meander Scar and Cutoff

Contour Interval 5'

- Instructions:**
1. Cut out a rectangular base.
 2. Figure out and write down the contour level next to each line.
 3. Use carbon paper to transfer the lines, one at a time, onto separate pieces of cardboard.
 4. Cut out each of the contour levels.
 5. Glue the contour levels together with the higher levels on top.

